



THE
ROSS REALTY
GROUP, INC.
COMMERCIAL LEASING, MANAGEMENT, AND SALES

FOR LEASE PINELLAS OFFICE SPACE

For more information,
please contact:

JAMES MOLER
jimmoler@rossrealty.com

NED ROBERTS
nedroberts@rossrealty.com

Tel: (727) 725-2800
Fax: (727) 726-6780

Quality Spaces, Ready to Occupy!



The Fairways Office Center at Bardmoor

**8200 & 8250 BRYAN DAIRY ROAD
LARGO, FL 33777**

Prime Mid-County Location

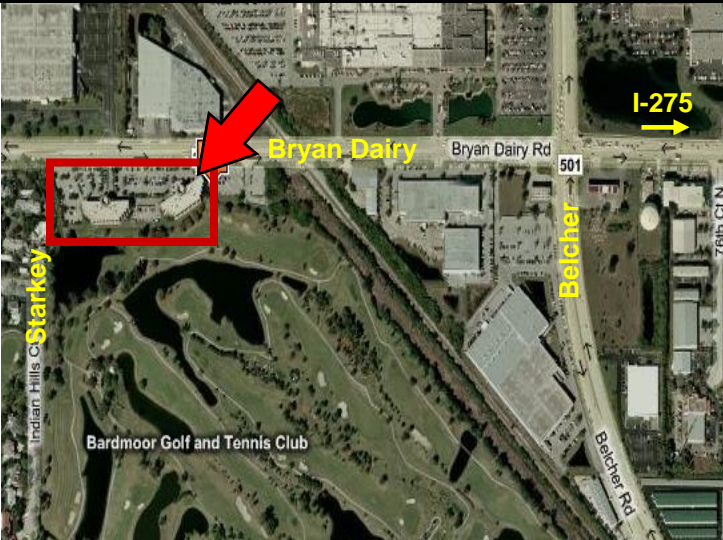
- ❖ 1,500 - 31,401 SF available for lease
- ❖ 10 minutes from St. Pete-Clearwater Int'l Airport and I-275
- ❖ High Visibility at Bryan Dairy Road between Belcher & Starkey
- ❖ Adjacent to prestigious area of Bardmoor
- ❖ Office Space with private executive balconies and golf course views
- ❖ Impressive exterior architecture, and lobby common areas



Local Drive Times & Distances

To:	Distance	Drive Time
St. Pete/Clwtr Int'l Airport	5 miles	10 minutes
I-275	5 miles	10 minutes
Downtown Clearwater	11 miles	20 minutes
Downtown St. Pete	13 miles	21 minutes

LOCATION



OFFERED BY: JAMES MOLER NED ROBERTS

The Ross Realty Group, Inc.

CentreS at Feather Sound
3001 Executive Drive, #250
Clearwater, FL 33762-5324

Phone: (727) 725-2800 • Fax: (727) 726-6780

E-mail: jimmoler@rossrealty.com
nedroberts@rossrealty.com

Visit our website: <http://www.rossrealty.com>



INTERIOR PHOTOS & FLOOR PLANS (not to scale)



*Executive Balconies
with Golf Course views!*



*Beautifully Appointed
Lobby and Common Areas*



Any information given herein is obtained from sources considered reliable. However, we are not responsible for misstatement of facts, errors, omissions, prior sale, withdrawal from market, modification of mortgage commitment, terms and considerations, or change in price without notice. The information supplied herein is for informational purposes only and shall not contain a warranty or assurance that said information is correct. Any person intending to rely upon the information supplied herein should verify said information independently.